

EDMUS 5.5.1 – INSTALLATION INSTRUCTIONS

If you are upgrading EDMUS from EDMUS 4 or 4.1, please look up the accompanying document: "EDMUS 5.5.1 - Upgrading from EDMUS 4.pdf".
(For an upgrade from an earlier EDMUS version, please contact the EDMUS Coordinating Center).

For a **network installation**, please look up the accompanying document: "EDMUS 5.5.1 - Network installation instructions.pdf".

To be able to make a NEW installation of EDMUS, **you must have administrator rights on the computer** (for the duration of the installation).

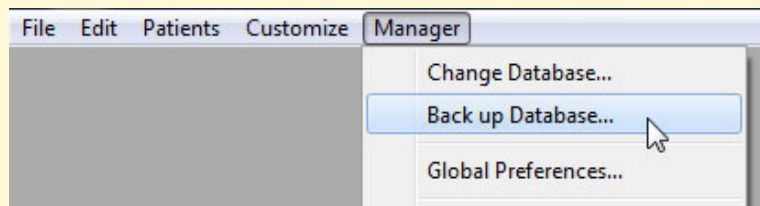
1. Important: first make a backup copy of your database

The database is usually called "Edmus.df1".

If you already have EDMUS 5.0 to 5.5, **make sure you have a recent backup copy of your EDMUS datafile** (the file containing your patients' data) before proceeding with the installation.

o Either using EDMUS itself

Choose "Backup Database" from the "Manager" menu to **make a backup copy of your database file** at the location of your choice.

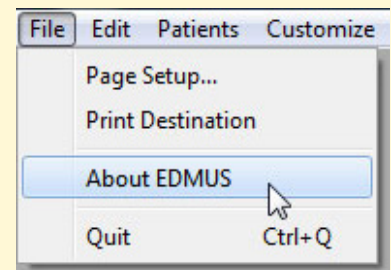


o Or manually

To find out where your EDMUS datafile is located, launch EDMUS and choose "About EDMUS" from the "File" menu.

In the window that opens, the path to the datafile is shown:

```
Database ID 1234567890
Database C:\USERS\PUBLIC\EDMUS SOFTWARE
V5\EDMUS\data\Edmus.df1
```

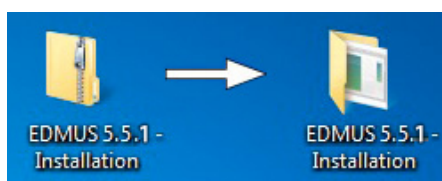


Make a backup copy of this file before continuing with the installation.

Do NOT CONTINUE UNTIL YOU HAVE A COPY OF YOUR EDMUS DATABASE FILE

2. Download EDMUS 5.5.1 from the EDMUS web site

http://www.edmus.org/en/soft/edmus_dl.php



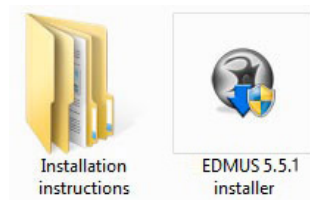
The downloaded "EDMUS 5.5.1 - Installation.zip" file is a zipped folder, you should unzip it:

- o *Windows*: right-click on the file, then choose "Extract" or "Extract All" (wording may vary with your version of Windows).
- o *Mac*: double-click the file.

The unzipped "EDMUS 5.5.1 - Installation" folder will be created next to the zipped one.

The "EDMUS 5.5.1 - Installation" folder contains:

- o the installation program itself ("EDMUS 5.5.1 installer"),
- o installation instructions in English and French.

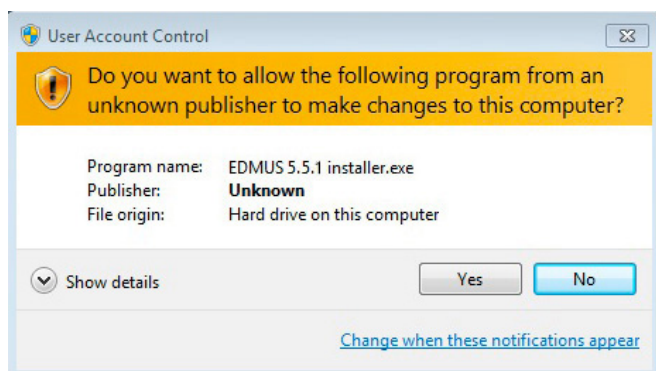


3. Start the installation of EDMUS

Double-click the installation program ("EDMUS 5.5.1 installer") to start the installation of EDMUS.

A note on security settings

When launching the EDMUS installer program for the first time, depending on the security settings of your computer, you may encounter a message telling you that the installer program is from "an unknown publisher" or "an unidentified developer".



In this case:

- o *On Windows*
Click "Yes" to "allow the following program from an unknown publisher to make changes to this computer".
- o *On Mac*
Right-click on the installer and choose "Open", then click "Open" in the dialog window that appears.

The installation

When launching the EDMUS installer, there are 2 cases:

CASE 1: You are installing EDMUS for the first time on this computer

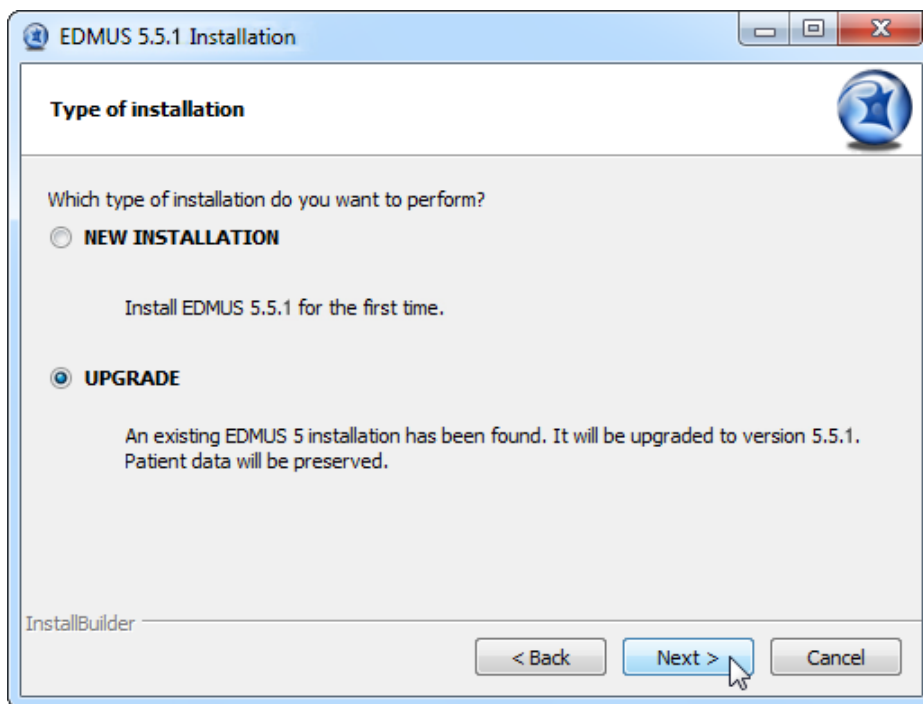
No option will be proposed. Accept the terms of the license, then let the installation proceed.

What's going to happen

EDMUS 5.5.1 will be installed, with an empty database (no patient).

CASE 2: You already have EDMUS 5.0 or higher on this computer

Accept the terms of the license, then select the "UPGRADE" option (it will be selected by default). Then let the installation proceed.



What's going to happen

EDMUS 5.5.1 will be installed, replacing the previous EDMUS 5 (5.0, 5.1, 5.2, 5.3, 5.4, 5.4.1 or 5.5) installation. Your EDMUS datafile (with your patient data) will be untouched, and will be updated at first launch of EDMUS 5.5.1 (see paragraph 5 below).

4. Once the installation is done, launch EDMUS 5.5.1

o On Windows

Launch EDMUS 5 by double-clicking the "EDMUS 5" shortcut that was placed on the Desktop.

o On Mac

Launch EDMUS 5 by clicking the "EDMUS 5" shortcut that was placed in the Dock.

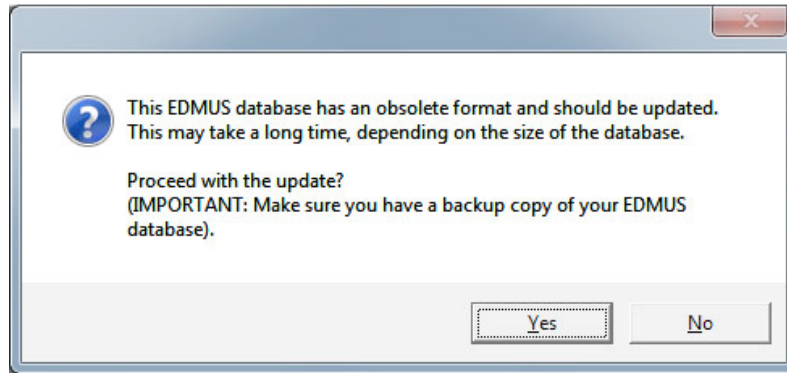


5. Updating an older EDMUS database

(ONLY IF UPGRADING FROM AN EARLIER **EDMUS 5** VERSION: 5.0 to 5.4.1) (case 2 above)

If you already have an older EDMUS 5 installation on this computer, the datafile (containing your patient data) needs to be updated.

At first launch, you will be asked if you wish to **update the database to the new EDMUS format**, click Yes:

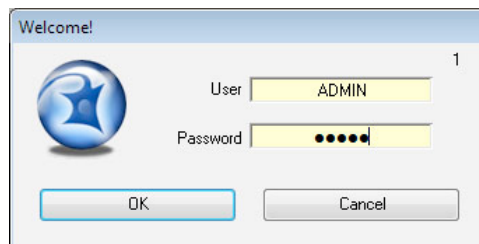


Attention, the database update can take a long time, up to one hour or more for a very large database (several thousand patients). This is very dependent on how powerful your computer is.

IMPORTANT: If you are upgrading a network EDMUS installation, you should upgrade a LOCAL copy of the database, before placing it back onto the server. For the full procedure, please look up the accompanying document: "EDMUS 5.5.1 - Network Installation.pdf".

6. User name and Password

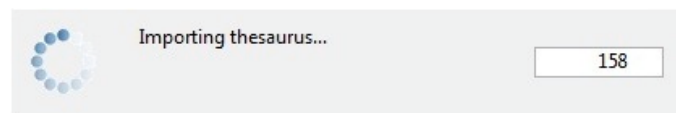
At launch, EDMUS will request *your User name and Password*. By default, these are ADMIN and ADMIN (ignore upper/lowercase), unless you had changed them in a previous installation.



7. At first launch: importing new Thesaurus and Help files

(ONLY IF UPGRADING FROM AN EARLIER **EDMUS 5** VERSION: 5.0 to 5.5) (case 2 above)

At first launch, for an upgrade, EDMUS will **automatically import new Thesaurus and Help files**: this will only occur only this once, and will last a few minutes at most. The personal items you may have added to the Thesauruses will be kept.



After this step, EDMUS will automatically delete the thesaurus files. However if at the next launch of EDMUS these files are (needlessly) imported again, you should **DELETE** the following files manually from the EDMUS Software v5/EDMUSdata/ folder:

Countries.txt, Departements.txt
EDMUSV5_EX.ETH, EDMUSV5_ST.STH, EDMUSV5_TH.THE, EDMUSV5_TT.TTH
EDMUSV5.HLP, EDMUSV5.SCL

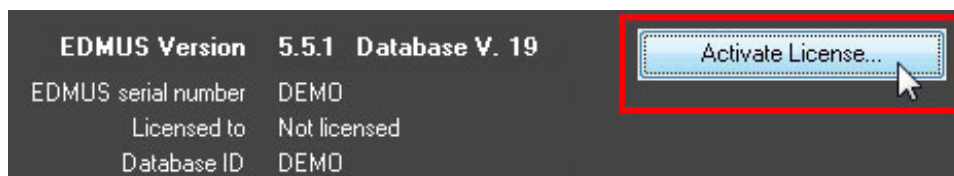
8. Activate your EDMUS 5 license

Once EDMUS is installed and (if necessary) the database is updated, **you should activate your EDMUS 5 license**. Without a license, you will not be able to create more than 3 patients in the database, and EDMUS will stop functioning after a given date.

You can purchase an EDMUS 5 license on the EDMUS web site at http://www.edmus.org/en/soft/edmus_purchase.html). The license will be sent to you by e-mail, as an attached zipped file.

To activate your EDMUS 5 license:

- o Unzip the attached file, you will get one or more file(s) with an ".ini" extension (for instance "B1286.ini"), each corresponding to an EDMUS license.
- o Launch EDMUS 5, and select "About EDMUS" from the "File" menu.
- o In the window that opens, click the "Activate license" button.
- o Go select the license file.
- o That's it! You can put the license file into the Trash, or keep it if you think you may need to activate your EDMUS 5 license again.

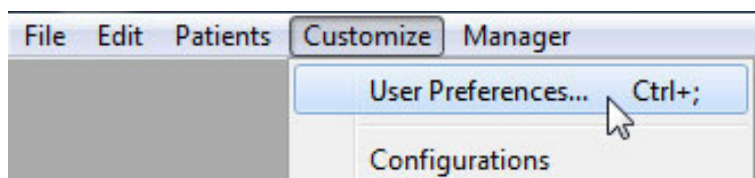


9. Language

At first launch, for a new EDMUS installation, the program will by default be in English.

If you wish EDMUS to use another language:

- ▶ Choose "User Preferences" in the "Customize" menu.



- ▶ Then, in the "User Preferences" window, click Modify, select the language to use, and click OK.



10. Configuration

At first launch, for a new EDMUS installation, the program will be by default in the "Light" configuration, which only displays the main fields of the database.

You can change this configuration:

- ▶ Choose "User Preferences" in the "Customize" menu.
- ▶ Then, in the "User Preferences" window, click Modify, select the configuration to use, and click OK.



The following configurations are available:

- ▶ **Premium:** the most complete (displays all fields of the database),
- ▶ **Light:** simplified (only displays the main fields of the database),
- ▶ **EDEN:** specifically tailored for NMO patients,
- ▶ **OFSEP Minimal:** very simplified, corresponding to the "Minimal OFSEP Form" (in use by the French Observatory of MS).

In every case, the same database is used, the difference is only one of presentation.