

EDMUS 5.5.1 – NETWORK INSTALLATION INSTRUCTIONS

If you are upgrading EDMUS from EDMUS 4 or 4.1, please look up the accompanying document:
"EDMUS 5.5.1 - Upgrading from EDMUS 4 (Network installation).pdf".

(For an upgrade from an earlier EDMUS version, please contact the EDMUS Coordinating Center).

For a **local installation**, please look up the accompanying document:
"EDMUS 5.5.1 - Installation instructions.pdf".

To be able to make a NEW installation EDMUS,
you must have administrator rights on the computer
(for the duration of the installation).

Introduction

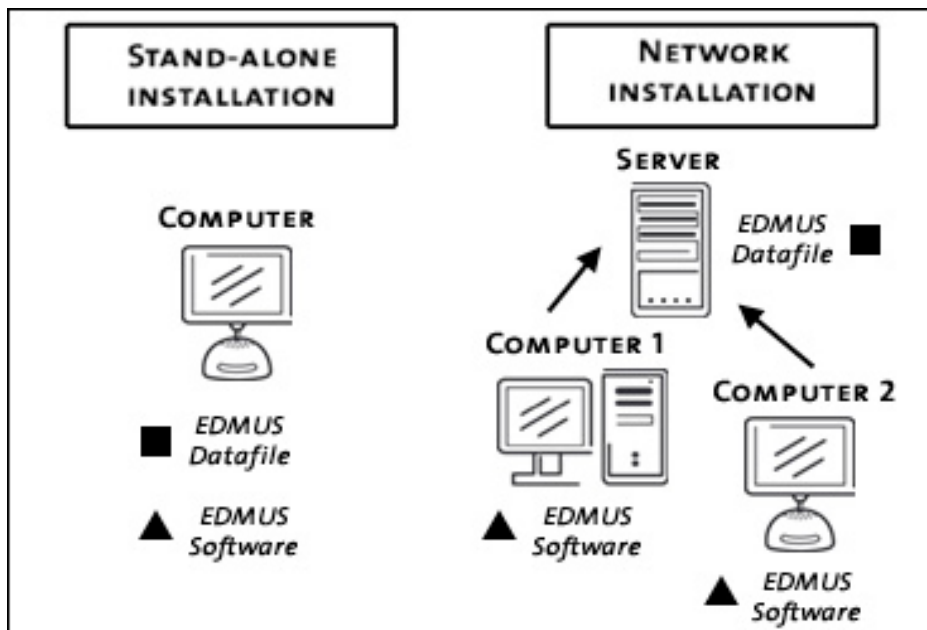
EDMUS is comprised of two main elements:

- o the EDMUS database file (or EDMUS datafile), containing the patient data;
- o and the EDMUS software itself, which accesses the database.

Thus, to share your EDMUS database over a network, enabling several computers to access the same datafile, you only need to follow these 3 steps:

1. Place your EDMUS datafile on a server.
2. Install EDMUS on one of the computers that must access the datafile.
3. Set EDMUS to use the datafile on the server.

Then repeat steps 2 and 3 above on every computer that must access the datafile.



Detailed instructions on how to install EDMUS in a network configuration follow.

Before the installation

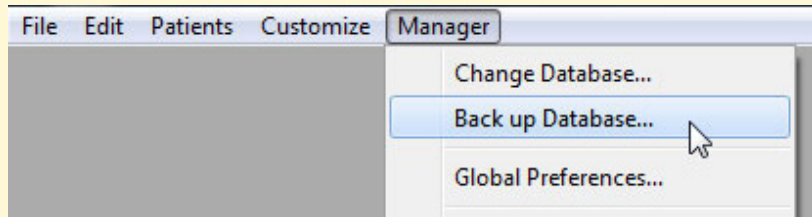
1. Important: first make a backup copy of your database

The database is usually called "Edmus.df1".

If you already have EDMUS 5.0 to 5.5, **make sure you have a recent backup copy of your EDMUS datafile** (the file containing your patients' data) before proceeding with the installation.

- o *Either using EDMUS itself*

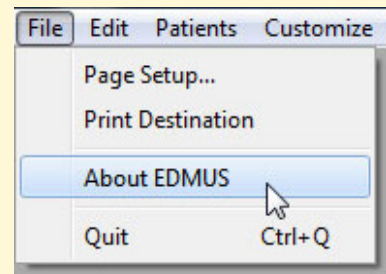
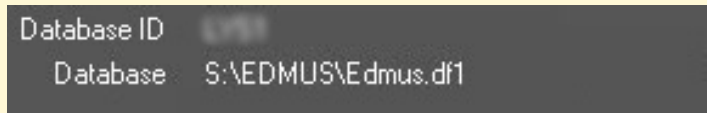
Choose "Backup Database" from the "Manager" menu to **make a backup copy of your database file** at the location of your choice.



- o *Or manually*

To find out where your EDMUS datafile is located, launch EDMUS and choose "About EDMUS" from the "File" menu.

In the window that opens, the path to the datafile is shown:

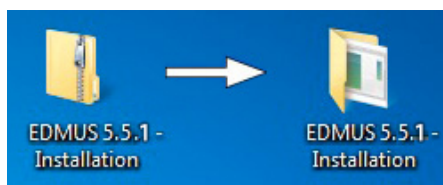


Make a backup copy of this file before continuing with the installation.

Do NOT CONTINUE UNTIL YOU HAVE A COPY OF YOUR EDMUS DATABASE FILE

2. Download EDMUS 5.5.1 from the EDMUS web site

http://www.edmus.org/en/soft/edmus_dl.php



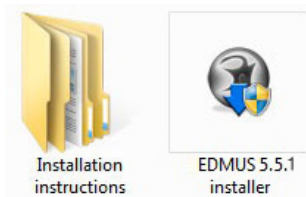
The downloaded "EDMUS 5.5.1 - Installation.zip" file is a zipped folder, you should unzip it:

- o *Windows:* right-click on the file, then choose "Extract" or "Extract All" (wording may vary with your version of Windows).
- o *Mac:* double-click the file.

The unzipped "EDMUS 5.5.1 - Installation" folder will be created next to the zipped one.

The "EDMUS 5.5.1 - Installation" folder contains:

- o the installation program itself ("EDMUS 5.5.1 installer"),
- o installation instructions in English and French.



You will need to perform the installation on several computers: for convenience, **copy the installation program on a USB Flash Drive.**

The installation process

- o If you have **no previous installation of EDMUS 5.0 to 5.5**:
→ go to step 3 .
- o If you have **a previous local installation of EDMUS 5.0 to 5.5**, but **not a networked one** (you are not yet sharing your EDMUS database over a network):
→ go to step 5 .
- o Otherwise (if you are **already using EDMUS 5.0 to 5.5 in a network configuration**, with a shared database):
→ go to step 4 .

3. No previous installation of EDMUS? Install EDMUS 5.5.1

If you have **no previous installation of EDMUS 5.0 to 5.5**: *you will install EDMUS 5.5.1 on the first computer that must access the shared database.*

Double-click the installation program ("EDMUS 5.5.1 installer") to start the installation of EDMUS. No option will be proposed. Accept the terms of the license, then let the installation proceed.

EDMUS 5.5.1 will be installed, with an empty database (no patient).

Then → go directly to step 6 .

4. Previous network installation of EDMUS 5.0 to 5.5? Get a local copy of the database

If you are already using EDMUS 5.0 to 5.5 in a network configuration, with a shared database: *you will copy the database from the server and place this copy on the computer itself (you will place it back onto the server at a later step).*

Why a local copy? Because the database update will be quicker and safer this way, with no risk of network interruptions.

You should already have made a backup copy of the shared database file (if not, go back to step 1).

- o Make a new copy of the backup copy of your old EDMUS database file. If it is not named "Edmus.df1", **rename it "Edmus.df1"**.
- o Then **place this renamed copy** of your database file **on the first computer** where you wish to install EDMUS 5.5.1 (and where a previous EDMUS 5.0 to 5.5 installation is present), at the following location (**replacing** the Edmus.df1 datafile that is already there if any):
 - (for Windows XP):
C:\Program Files\EDMUS Software v5\EDMUSdata\Edmus.df1
 - (for Windows Vista, Windows 7, Window 8):
C:\Users\Public\EDMUS Software v5\EDMUSdata\Edmus.df1
 - (for Mac OS X):
/Applications/EDMUS Software v5/EDMUSdata/Edmus.df1
- o **VERY IMPORTANT, do not forget this step:**
in the same "EDMUSdata" folder where you have placed the database, double-click the "EdmusPath.ini" file to open it, **erase its content** if any, save it and close it.

Then → go to step 5 .

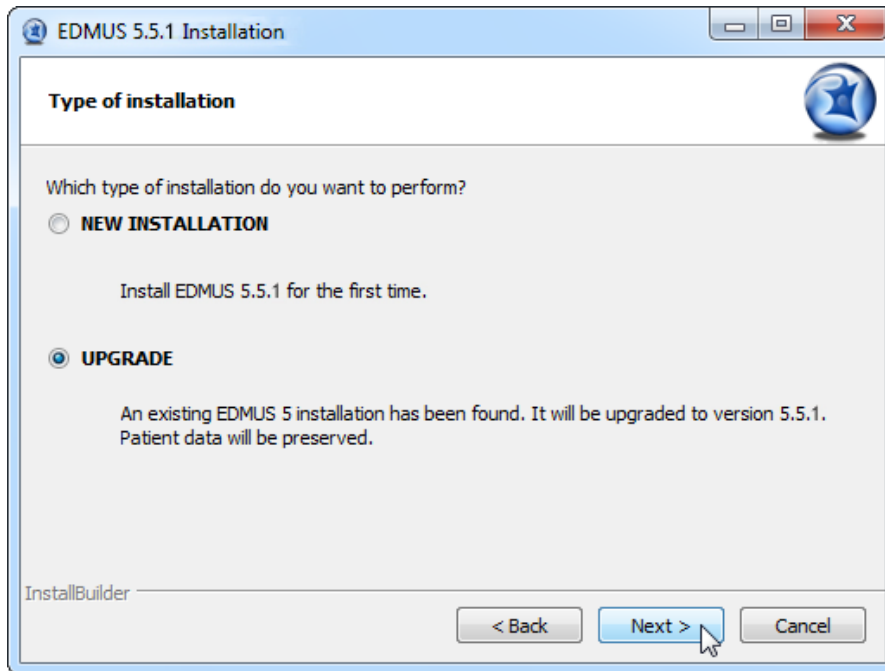
5. Previous installation of EDMUS 5.0 to 5.5? Upgrade it to EDMUS 5.5.1

You have reached this step because:

- you have **a previous local installation of EDMUS 5.0 to 5.5**, but **not a networked one** (you are not yet sharing your EDMUS database over a network),
- or you have just made (in step 4) a **local copy of your shared EDMUS database**.

You will now upgrade this EDMUS installation to version 5.5.1.

Double-click the installation program ("EDMUS 5.5.1 installer") to start the installation of EDMUS. Accept the terms of the license. The "UPGRADE" option will be selected by default, let the installation proceed.



Then **→ go to step 6**.

6. Once the installation is done, launch EDMUS 5.5.1

o *On Windows*

Launch EDMUS 5 by double-clicking the "EDMUS 5" shortcut that was placed on the Desktop.

o *On Mac*

Launch EDMUS 5 by clicking the "EDMUS 5" shortcut that was placed in the Dock.



7. Update your older EDMUS database, if any

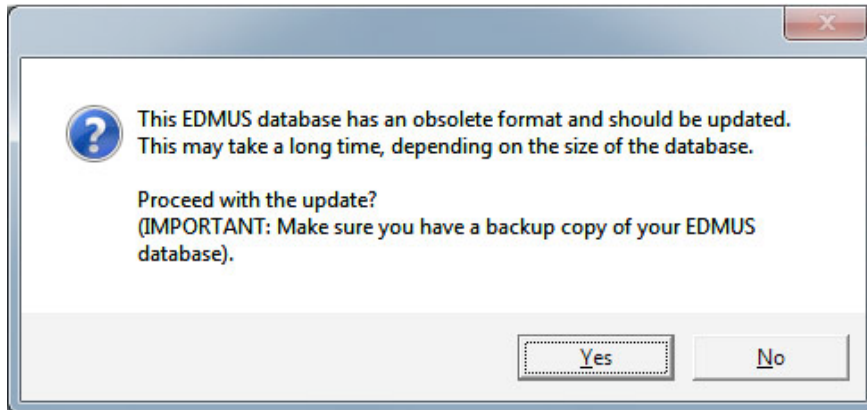
(ONLY IF UPGRADING FROM EDMUS 5.0 TO 5.4.1)

If you had an earlier EDMUS 5 to 5.4.1 installation (networked or not) (see steps 4 and 5), you now have an EDMUS 5.5.1 installation on the first computer, with a copy of your EDMUS database file.

Otherwise **→ go directly to step 8**.

You will now update this database file to the new EDMUS 5.5.1 format.

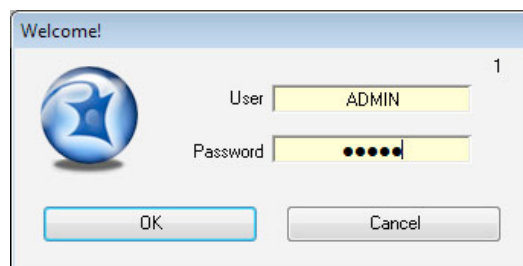
At first launch, you will be asked if you wish to **update the database to the new EDMUS format**, click Yes:



Attention, the database update can take a long time, up to one hour or more for a very large database (several thousand patients). This is very dependent on how powerful your computer is.

8. User name and Password

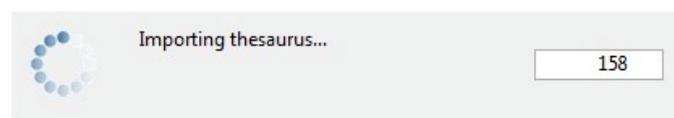
At launch, EDMUS will request *your User name and Password*. By default, these are ADMIN and ADMIN (ignore upper/lowercase), unless you had changed them in a previous installation.



9. At first launch: importing new Thesaurus and Help files

(ONLY IF UPGRADING FROM EDMUS 5.0 TO 5.5)

At first launch, for an upgrade, EDMUS will **automatically import new Thesaurus and Help files**: this will only occur only this once, and will last a few minutes at most. The personal items you may have added to the Thesauruses will be kept.



After this step, EDMUS will automatically delete the thesaurus files. However if at the next launch of EDMUS these files are (needlessly) imported again, you should **DELETE** the following files manually from the EDMUS Software v5/EDMUSdata/ folder:

Countries.txt, Departements.txt
 EDMUSV5_EX.ETH, EDMUSV5_ST.STH, EDMUSV5_TH.THE, EDMUSV5_TT.TTH
 EDMUSV5.HLP, EDMUSV5.SCL

10. Activate your EDMUS 5 License

Once EDMUS is installed and (if necessary) the database is updated, **you should activate your EDMUS 5 license**. Without a license, you will not be able to create more than 3 patients, and EDMUS will stop functioning after a given date.

You can purchase an EDMUS 5 license on the EDMUS web site at http://www.edmus.org/en/soft/edmus_purchase.html). The license will be sent to you by e-mail, as an attached zipped file.

To activate your EDMUS 5 license:

- o Unzip the attached file, you will get one or more file(s) with an ".ini" extension (for instance "B1286.ini"), each corresponding to an EDMUS license.
- o Launch EDMUS 5, and select "About EDMUS" from the "File" menu.
- o In the window that opens, click the "Activate license" button.
- o Go select the license file.
- o That's it! You can put the license file into the Trash, or keep it if you think you may need to activate your EDMUS 5 license again.



11. Language & Configuration

o Language

At first launch, for a new EDMUS installation, the program will by default be in English. If you wish EDMUS to use another language:

- Choose "User Preferences" in the "Customize" menu.
- Then, in the "User Preferences" window, click Modify, select the language to use, and click OK.

o Configuration

At first launch, for a new EDMUS installation, the program will be by default in the "Light" configuration, which only displays the main fields of the database. You can change this configuration:

- Choose "User Preferences" in the "Customize" menu.
- Then, in the "User Preferences" window, click Modify, select the configuration to use, and click OK.

The following configurations are available:

- **Premium**: the most complete (displays all fields of the database),
- **Light**: simplified (only displays the main fields of the database),
- **EDEN**: specifically tailored for NMO patients,
- **OFSEP Minimal**: very simplified, corresponding to the "Minimal OFSEP Form" (in use by the French Observatory of MS).

In every case, the same database is used, the difference is only one of presentation.

12. Place your database on a server

You will now place your EDMUS database file on a networked computer (server), to which all computers running the EDMUS software can have access.

- o *If you had an earlier EDMUS 5 to 5.5 installation (in network or not)*

You now have an updated copy of your database file on your computer (see step 7 above): place this updated datafile on the server (and remove the older datafile if any). You can rename it if you wish, e.g. Edmus541.df1.

- o *Otherwise*

Use an empty EDMUS database file (with no patient). There is a zipped one (to be unzipped) available in the installed EDMUS software folder, at this location:

(for Windows XP):

C:\Program Files\EDMUS Software v5\EDMUSsupport\Empty EDMUS 5 datafile\Edmus.zip

(for Windows Vista, Windows 7, Window 8):

C:\Users\Public\EDMUS Software v5\EDMUSsupport\Empty EDMUS 5 datafile\Edmus.zip

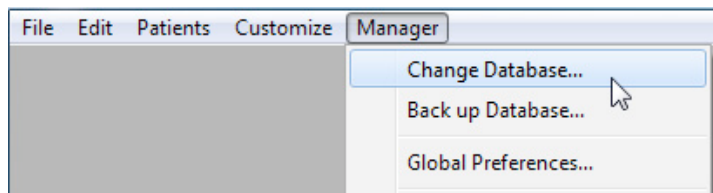
(for Mac OS X):

/Applications/EDMUS Software v5/EDMUSsupport/Empty EDMUS 5 datafile/Edmus.zip

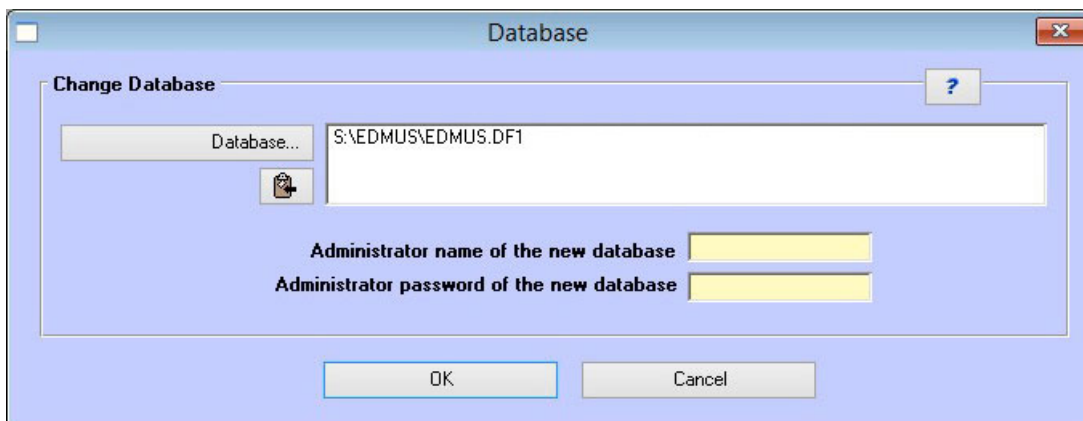
13. Point EDMUS to the shared database on the server

You will now instruct the EDMUS software to access the shared database on the server.

- o On the computer where you installed EDMUS 5.5.1, launch EDMUS.
- o In the "Manager" menu, select "Change Database...":



- o In the window that opens, click "Database..." and go find the shared database file on the server:



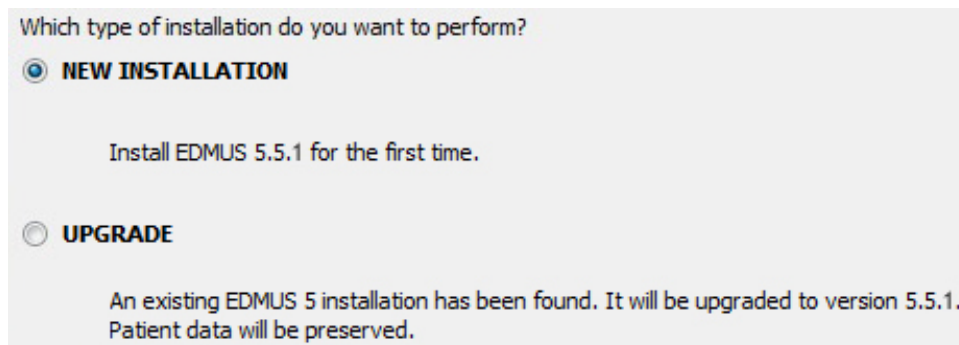
- o Enter the Administrator user name and password (the same ones you used for the old database), and click OK.
- o To check whether you are connected to the updated database file, select "Patient List" in the "Patients" menu, and click "Show patients".

14. Install EDMUS on the other computers

On **every other computer** that must access the shared database, follow these steps:

o *Install EDMUS 5.5.1 on the computer*

If asked, you should select "NEW INSTALLATION" and NOT "UPGRADE" (even if there is a previous EDMUS installation on the computer).



o *BEFORE launching EDMUS on this computer*

You should **DELETE** the following files which the installer may have placed in the EDMUS Software v5/EDMUSdata folder in previous steps:

Countries.txt
 Departements.txt
 EDMUSV5_EX.ETH
 EDMUSV5_ST.STH
 EDMUSV5_TH.THE
 EDMUSV5_TT.TTH
 EDMUSV5.HLP
 EDMUSV5.SCL
 adresse_adresse.fix
 adresse_patient.fix

Otherwise, the importation of thesaurus files into the shared database will be needlessly performed again, while you have already done it when installing EDMUS on the first computer.

o *Activate an EDMUS 5 License on the computer (see step 10 above)*

- ▶ The EDMUS installation on each computer should have a valid EDMUS license.
- ▶ If you wish several computers to be able to access the database **at the same time**, each computer must have a **different** license.

o *Change language and configuration if desired (see step 11 above)*

o *Point EDMUS to the shared database on the server (see step 13 above)*

VERY IMPORTANT:
Install EDMUS 5.5.1 on ALL computers connected to the shared database

To be able to access the shared database,
 all connected computers **MUST** use the same version of EDMUS.