

EDMUS 5.5.1 – UPGRADING FROM EDMUS 4 OR 4.1

If you are installing EDMUS for the first time on this computer, or upgrading EDMUS from EDMUS 5.0 or a later version, please look up the accompanying document: "EDMUS 5.5.1 - Installation instructions.pdf".
(For an upgrade from an earlier EDMUS version, please contact the EDMUS Coordinating Center).

For a **network installation**, please look up the accompanying document: "EDMUS 5.5.1 - Upgrading from EDMUS 4 (Network installation).pdf".

To be able to make a NEW installation of EDMUS, **you must have administrator rights on the computer** (for the duration of the installation).

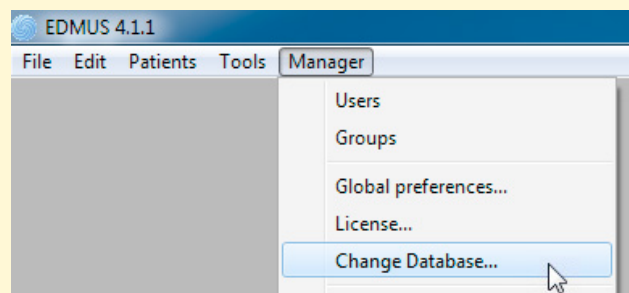
1. Important: first make a backup copy of your database

The database is usually called "Edmus.df1".

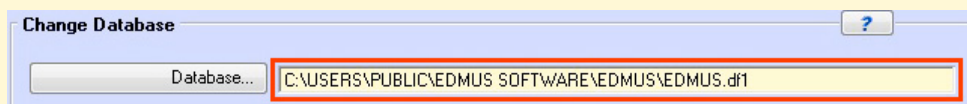
When upgrading from EDMUS 4 or 4.1, **make sure you have a recent backup copy of your EDMUS datafile** (the file containing your patients' data) before proceeding with the installation.

To **find where your database file is located**, there are 2 ways.

- o Choose "Change Database..." from the "Manager" menu of EDMUS 4 or 4.1.



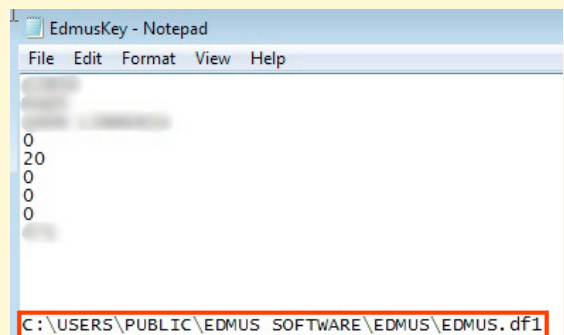
In the window that opens, the path to the database is displayed:



- o Alternatively, find the "EdmusKey.ini" file, located at:

C:\Program Files\EDMUS Software\EDMUS\ (Windows XP)
C:\Users\Public\EDMUS Software\EDMUS\ (Windows Vista, 7, 8)
/Applications/EDMUS Software/EDMUS/ (Mac OS X)

Double-click this file to open it: it contains the path to the database.

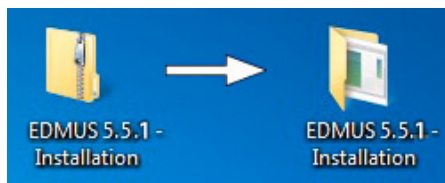


Make a **backup copy** of the database file:

DO NOT CONTINUE UNTIL YOU HAVE A COPY OF YOUR EDMUS DATABASE FILE

2. Download EDMUS 5.5.1 from the EDMUS web site

http://www.edmus.org/en/soft/edmus_dl.php



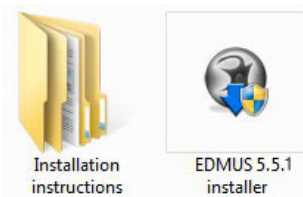
The downloaded "EDMUS 5.5.1 - Installation.zip" file is a zipped folder, you should unzip it:

- o *Windows*: right-click on the file, then choose "Extract" or "Extract All" (wording may vary with your version of Windows).
- o *Mac*: double-click the file.

The unzipped "EDMUS 5.5.1 - Installation" folder will be created next to the zipped one.

The "EDMUS 5.5.1 - Installation" folder contains:

- o the installation program itself ("EDMUS 5.5.1 installer"),
- o installation instructions in English and French.

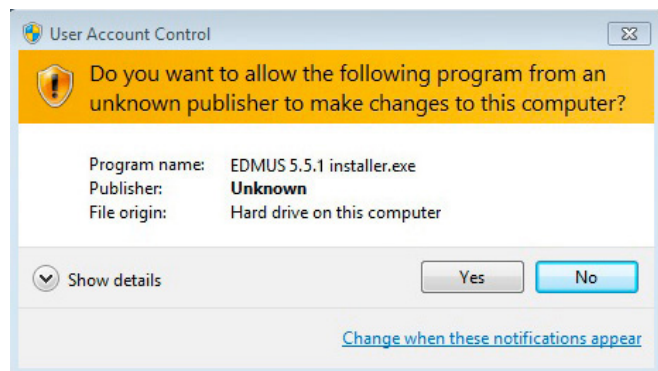


3. Start the installation of EDMUS

Double-click the installation program ("EDMUS 5.5.1 installer") to start the installation of EDMUS.

A note on security settings

When launching the EDMUS installer program for the first time, depending on the security settings of your computer, you may encounter a message telling you that the installer program is from "an unknown publisher" or "an unidentified developer".

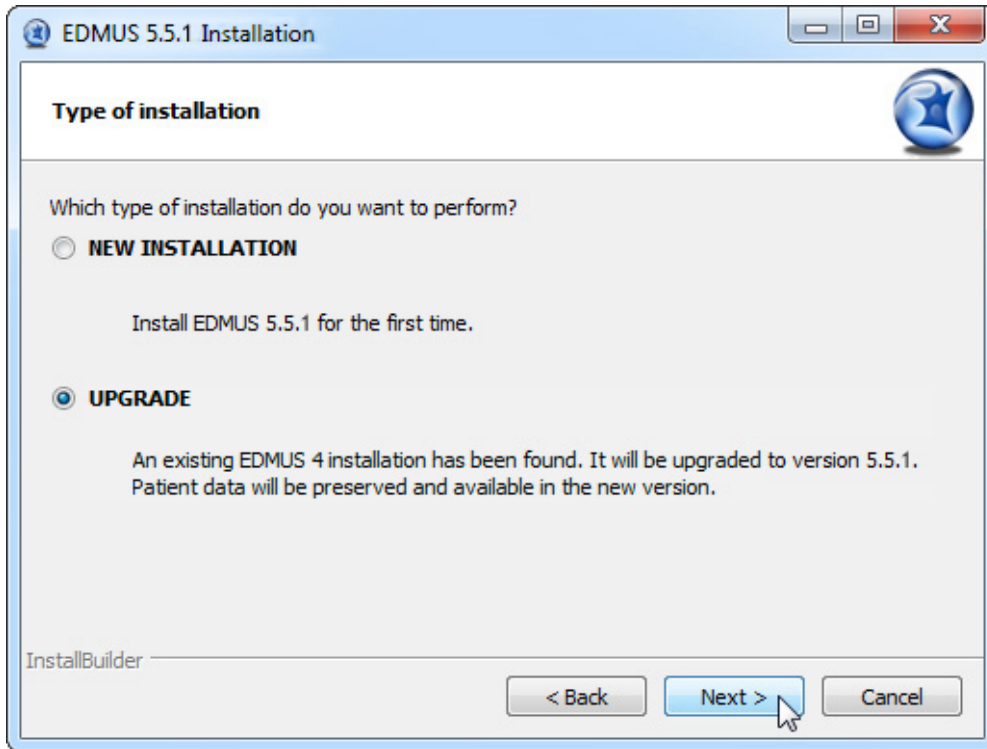


In this case:

- o *On Windows*
Click "Yes" to "allow the following program from an unknown publisher to make changes to this computer".
- o *On Mac*
Right-click on the installer and choose "Open", then click "Open" in the dialog window that appears.

The installation

Accept the terms of the license, then select the "UPGRADE" option (it will be selected by default). Then let the installation proceed.



What's going to happen

EDMUS 5.5.1 will be installed, without replacing EDMUS 4. Then your old EDMUS 4 datafile (with your patient data) will be copied into the EDMUS 5.5.1 installation. This copy of the datafile will be updated upon the first launch of EDMUS 5.5.1.

4. Uninstall EDMUS 4

At the end of the EDMUS 5.5.1 installation, the installer will recommend that you uninstall EDMUS 4:



- o In most cases, leave the box checked to uninstall EDMUS 4, and click "Finish".
- o However, **if you have no recent backup copy of your EDMUS 4 database**, uncheck the "Uninstall EDMUS 4" box. In this case, make a backup copy (see step 1 above), then you will have to uninstall EDMUS 4 yourself:
 - ▶ **On Windows**
Click the Start button, then "Control Panel", then "Add or Remove Programs" (wording may vary slightly with different versions of Windows). Select "EDMUS 4", then click "Change/Remove".
 - ▶ **On Mac**
Drop the "/Applications/EDMUS Software" folder into the Trash (attention, NOT the "EDMUS Software v5" folder!). Empty the Trash.

5. Once the installation is done, launch EDMUS 5.5.1

o *On Windows*

Launch EDMUS 5 by double-clicking the "EDMUS 5" shortcut that was placed on the Desktop.



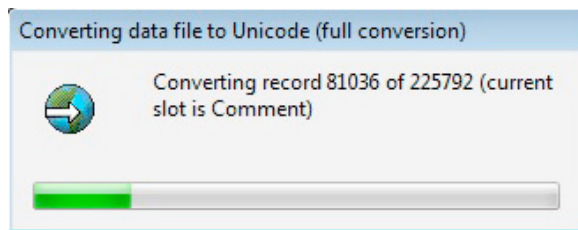
o *On Mac*

Launch EDMUS 5 by clicking the "EDMUS 5" shortcut that was placed in the Dock.

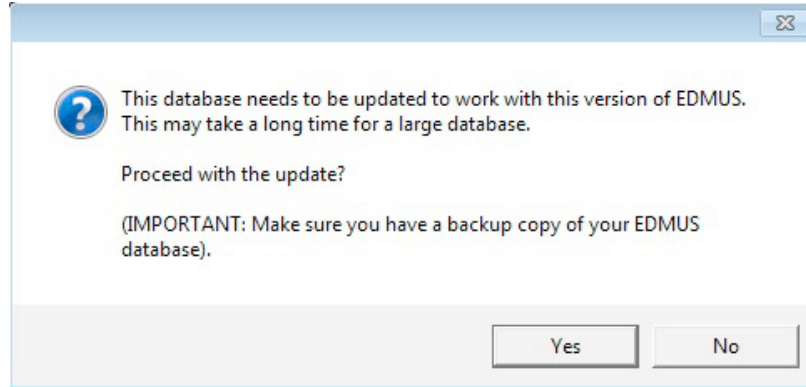
6. Update your older EDMUS database

The EDMUS 4 datafile (containing your patient data) **needs to be updated to the new EDMUS 5.5.1 format**. This will be done at the first launch of EDMUS 5.5.1, in 2 steps:

- o First, the database file will automatically be converted to Unicode (if this step does not proceed automatically, choose the "Full conversion" option when asked).



- o Then, you will be asked if you wish to **update the database to the new EDMUS format**, click Yes (otherwise EDMUS will quit):

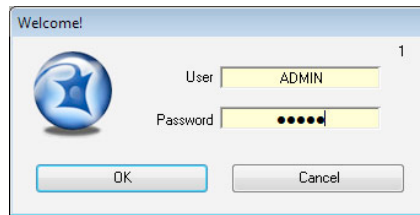


Attention, the database update can take a long time, up to a few hours for a very large database (several thousand patients). This is very dependent on how powerful your computer is.

IMPORTANT: If you are upgrading a network EDMUS installation, you should upgrade a LOCAL copy of the database, before placing it back onto the server. For the full procedure, please look up the accompanying document: "EDMUS 5.5.1 - Upgrading from EDMUS 4 (Network installation).pdf".

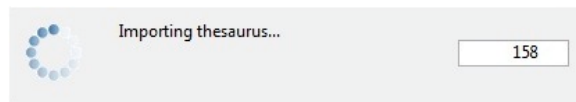
7. User name and Password

At launch, EDMUS will request *your User name and Password*. By default, these are ADMIN and ADMIN (ignore upper/lowercase), unless you had changed them in the previous installation.



8. At first launch: importing new Thesaurus and Help files

At first launch, EDMUS will **automatically import new Thesaurus and Help files**: this will only occur only this once, and will last a few minutes at most. The personal items you may have added to the Thesauruses will be kept.



After this step, EDMUS will automatically delete the thesaurus files. However if at the next launch of EDMUS these files are (needlessly) imported again, you should **DELETE** the following files manually from the EDMUS Software v5/EDMUSdata/ folder:

Countries.txt, Departements.txt
 EDMUSV5_EX.ETH, EDMUSV5_ST.STH, EDMUSV5_TH.THE, EDMUSV5_TT.TTH
 EDMUSV5.HLP, EDMUSV5.SCL

9. Activate your EDMUS 5 license

Once EDMUS is installed and the database is updated, **you should activate your EDMUS 5 license**. Without a license, you will not be able to create more than 3 patients in the database, and EDMUS will stop functioning after a given date.

You can purchase an EDMUS 5 license on the EDMUS web site at http://www.edmus.org/en/soft/edmus_purchase.html). The license will be sent to you by e-mail, as an attached zipped file.

To activate your EDMUS 5 license:

- o Unzip the attached file, you will get one or more file(s) with an ".ini" extension (for instance "B1286.ini"), each corresponding to an EDMUS license.
- o Launch EDMUS 5, and select "About EDMUS" from the "File" menu.
- o In the window that opens, click the "Activate license" button.
- o Go select the license file.
- o That's it! You can put the license file into the Trash, or keep it if you think you may need to activate your EDMUS 5 license again.

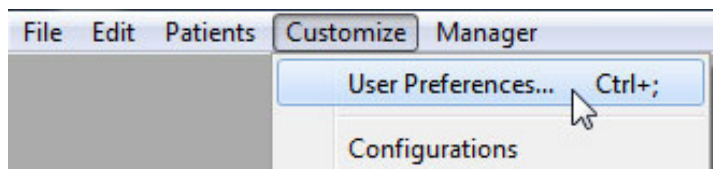


10. Language

At first launch, EDMUS may by default be in English.

If you wish EDMUS to use another language:

- ▶ Choose "User Preferences" in the "Customize" menu.
- ▶ Then, in the "User Preferences" window, click Modify, select the language to use, and click OK.



11. Configuration

At first launch, EDMUS may by default be in the "Light" configuration, which only displays the main fields of the database.

You can change this configuration:

- ▶ Choose "User Preferences" in the "Customize" menu.
- ▶ Then, in the "User Preferences" window, click Modify, select the configuration to use, and click OK.



The following configurations are available:

- ▶ **Premium:** the most complete (displays all fields of the database),
- ▶ **Light:** simplified (only displays the main fields of the database),
- ▶ **EDEN:** specifically tailored for NMO patients,
- ▶ **OFSEP Minimal:** very simplified, corresponding to the "Minimal OFSEP Form" (in use by the French Observatory of MS).

In every case, the same database is used, the difference is only one of presentation.