

# EDMUS 5.5.1 – NETWORK INSTALLATION INSTRUCTIONS (UPGRADING FROM EDMUS 4 OR 4.1)

If you are not upgrading EDMUS from EDMUS 4 or 4.1, please look up the accompanying document:  
"EDMUS 5.5.1 - Network installation instructions.pdf".

(For an upgrade from an earlier EDMUS version, please contact the EDMUS Coordinating Center).

For a **local installation**, please look up the accompanying document:  
"EDMUS 5.5.1 - Upgrading from EDMUS 4.pdf (Local installation)".

To be able to make a NEW installation EDMUS,  
**you must have administrator rights on the computer**  
(for the duration of the installation).

## Introduction

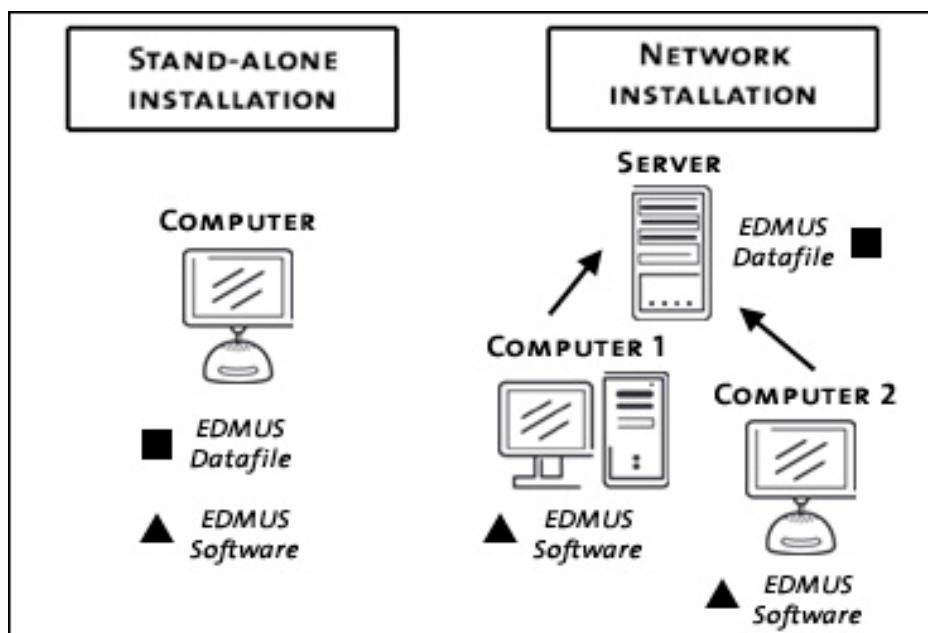
EDMUS is comprised of two main elements:

- o the EDMUS database file (or EDMUS datafile), containing the patient data;
- o and the EDMUS software itself, which accesses the database.

Thus, to share your EDMUS database over a network, enabling several computers to access the same datafile, you only need to follow these 3 steps:

1. Place your EDMUS datafile on a server.
2. Install EDMUS on one of the computers that must access the datafile.
3. Set EDMUS to use the datafile on the server.

Then repeat steps 2 and 3 above on every computer that must access the datafile.



Detailed instructions on how to install EDMUS in a network configuration (upgrading from EDMUS 4 or 4.1) follow.

# Before the installation

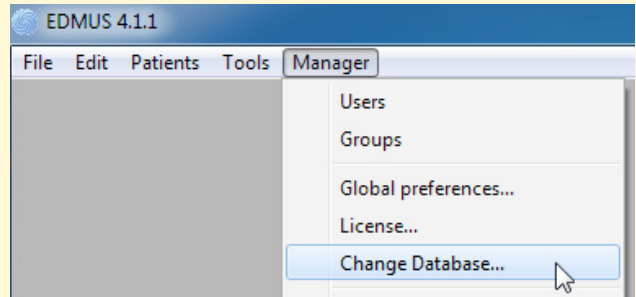
## 1. Important: first make a backup copy of your database

The database is usually called "Edmus.df1".

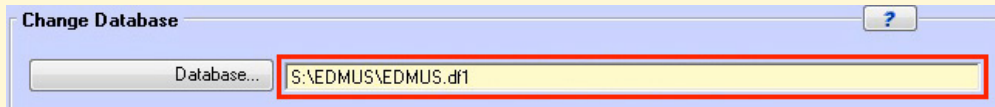
When upgrading from EDMUS 4 or 4.1, **make sure you have a recent backup copy of your EDMUS datafile** (the file containing your patients' data) before proceeding with the installation.

To find where your database file is located, there are 2 ways.

- o Choose "Change Database..." from the "Manager" menu of EDMUS 4 or 4.1.



In the window that opens, the path to the database is displayed:

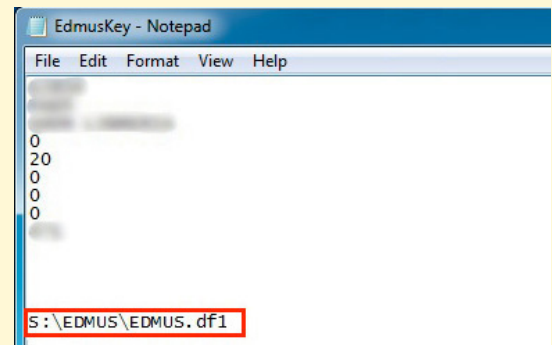


- o Alternatively, find the "EdmusKey.ini" file, located at:

C:\Program Files\EDMUS Software\EDMUS\  
 C:\Users\Public\EDMUS Software\EDMUS\  
 /Applications/EDMUS Software/EDMUS/

(Windows XP)  
 (Windows Vista, 7, 8)  
 (Mac OS X)

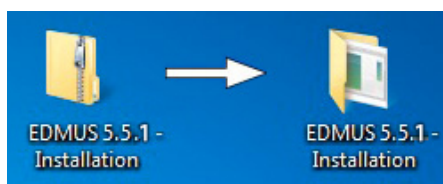
Double-click this file to open it: it contains the path to the database.



Make a **backup copy** of the database file:  
**Do NOT CONTINUE UNTIL YOU HAVE A COPY OF YOUR EDMUS DATABASE FILE**

## 2. Download EDMUS 5.5.1 from the EDMUS web site

[http://www.edmus.org/en/soft/edmus\\_dl.php](http://www.edmus.org/en/soft/edmus_dl.php)



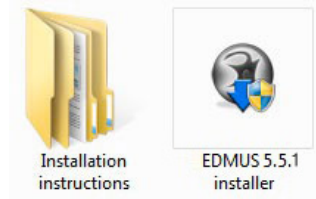
The downloaded "EDMUS 5.5.1 - Installation.zip" file is a zipped folder, you should unzip it:

- o *Windows*: right-click on the file, then choose "Extract" or "Extract All" (wording may vary with your version of Windows).
- o *Mac*: double-click the file.

The unzipped "EDMUS 5.5.1 - Installation" folder will be created next to the zipped one.

The "EDMUS 5.5.1 - Installation" folder contains:

- o the installation program itself ("EDMUS 5.5.1 installer"),
- o installation instructions in English and French.



You will need to perform the installation on several computers: for convenience, **copy the installation program on a USB Flash Drive**.

## The installation process

- o If you have **a previous local installation of EDMUS 4 or 4.1**, but **not a networked one** (you are not yet sharing your EDMUS database over a network):  
→ **go to step 4**.
- o Otherwise (if you are **already using EDMUS 4 or 4.1 in a network configuration**, with a shared database):  
→ **go to step 3**.

### 3. Get a local copy of the database

Since you are already using EDMUS 4 or 4.1 in a network configuration, with a shared database: *you will **copy the database from the server and place this copy on the computer itself** (you will place it back onto the server at a later step).*

**Why a local copy?** Because the database update will be quicker and safer this way, with no risk of network interruptions.

You should already have made a backup copy of the shared database file (if not, go back to step 1).

- o Make a new copy of the backup copy of your old EDMUS database file. If it is not named "Edmus.df1", **rename it "Edmus.df1"**.
- o Then **place this renamed copy** of your database file **on the first computer** where you wish to install EDMUS 5.5.1 (and where a previous EDMUS 4 or 4.1 installation is present), at the following location (**replacing** the Edmus.df1 datafile that is already there if any):

(for Windows XP):

C:\Program Files\EDMUS Software\EDMUS\Edmus.df1

(for Windows Vista, Windows 7, Window 8):

C:\Users\Public\EDMUS Software\EDMUS\Edmus.df1

(for Mac OS X):

/Applications/EDMUS Software/EDMUS/Edmus.df1

- o **VERY IMPORTANT, do not forget this step:**  
in the same "EDMUSdata" folder where you have placed the database, double-click the "EdmusPath.ini" file, **erase its content** if any, save it and close it.

Then → **go to step 4**.

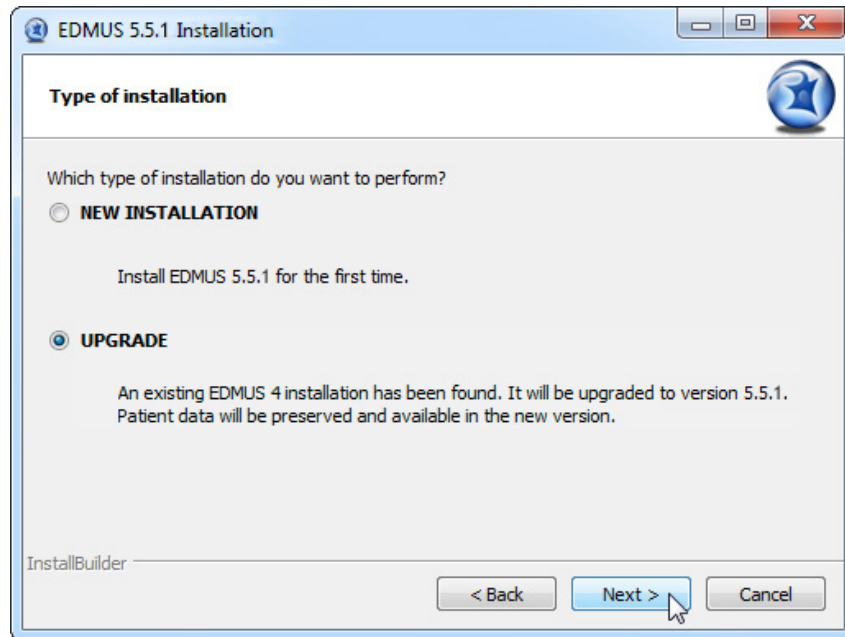
#### 4. Previous installation of EDMUS 4 or 4.1? Upgrade it to EDMUS 5.5.1

You have reached this step because:

- you have **a previous local installation of EDMUS 4 or 4.1**, but **not a networked one** (you are not yet sharing your EDMUS database over a network),
- or you have just made (in step 3) a **local copy of your shared EDMUS database**.

**You will now upgrade this EDMUS installation to version 5.5.1.**

Double-click the installation program ("EDMUS 5.5.1 installer") to start the installation of EDMUS. Accept the terms of the license. The "UPGRADE" option will be selected by default, let the installation proceed.



#### Uninstall EDMUS 4

At the end of the EDMUS 5.5.1 installation, the installer will recommend that you uninstall EDMUS 4:

##### Completing the EDMUS 5.5.1 Installation

EDMUS 5.5.1 was successfully installed on your computer.

Uninstall EDMUS 4 (HIGHLY RECOMMENDED)

- o In most cases, leave the box checked to uninstall EDMUS 4, and click "Finish".
- o However, **if you have no recent backup copy of your EDMUS 4 database**, uncheck the "Uninstall EDMUS 4" box. In this case, make a backup copy (see step 1 above), then you will have to uninstall EDMUS 4 yourself:
  - *ON WINDOWS*  
Click the Start button, then "Control Panel", then "Add or Remove Programs" (wording may vary slightly with different versions of Windows). Select "EDMUS 4", then click "Change/Remove".
  - *ON MAC OS X*  
Drop the "/Applications/EDMUS Software" folder into the Trash (attention, NOT the "EDMUS Software v5" folder!). Empty the Trash.

Then **→ go to step 5**.

## 5. Once the installation is done, launch EDMUS 5.5.1

---

### o On Windows

Launch EDMUS 5 by double-clicking the "EDMUS 5" shortcut that was placed on the Desktop.

### o On Mac

Launch EDMUS 5 by clicking the "EDMUS 5" shortcut that was placed in the Dock.



## 6. Update your older EDMUS database

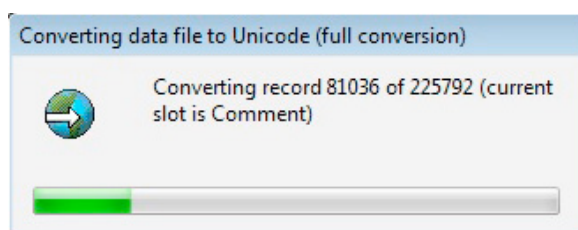
---

Since you had an earlier EDMUS 4 or 4.1 installation (networked or not) (see steps 3 and 4), you now have an EDMUS 5.5.1 installation on the first computer, with a copy of your EDMUS database file.

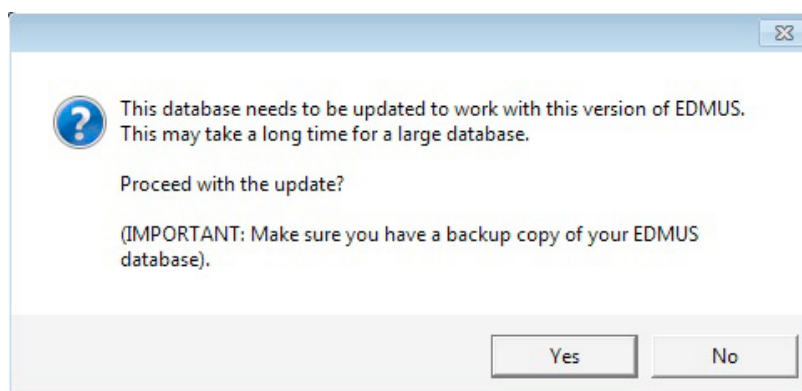
**You will now update this database file to the new EDMUS 5.5.1 format.**

This will be done at the first launch of EDMUS 5.5.1, in 2 steps:

- o First, the database file will automatically be converted to Unicode (if this step does not proceed automatically, choose the "Full conversion" option when asked).



- o Then, you will be asked if you wish to **update the database to the new EDMUS format**, click Yes (otherwise EDMUS will quit):

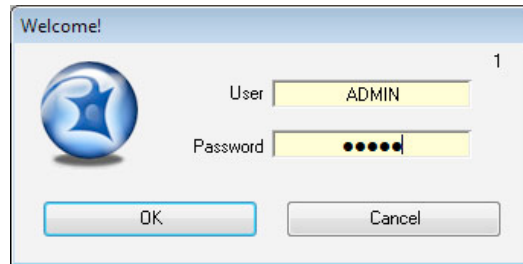


Attention, the database update can take a long time, up to a few hours for a very large database (several thousand patients). This is very dependent on how powerful your computer is.

## 7. User name and Password

---

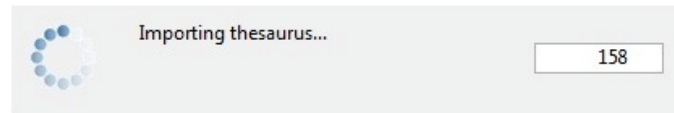
At launch, EDMUS will request *your User name and Password*. By default, these are ADMIN and ADMIN (ignore upper/lowercase), unless you had changed them in a previous installation.



## 8. At first launch: importing new Thesaurus and Help files

---

At first launch, EDMUS will **automatically import new Thesaurus and Help files**: this will only occur only this once, and will last a few minutes at most. The personal items you may have added to the Thesauruses will be kept.



After this step, EDMUS will automatically delete the thesaurus files. However if at the next launch of EDMUS these files are (needlessly) imported again, you should **DELETE** the following files manually from the EDMUS Software v5/EDMUSdata/ folder:

Countries.txt, Departements.txt  
 EDMUSV5\_EX.ETH, EDMUSV5\_ST.STH, EDMUSV5\_TH.THE, EDMUSV5\_TT.TTH  
 EDMUSV5.HLP, EDMUSV5.SCL

## 9. Activate your EDMUS 5 license

---

Once EDMUS is installed and (if necessary) the database is updated, **you should activate your EDMUS 5 license**. Without a license, you will not be able to create more than 3 patients, and EDMUS will stop functioning after a given date.

You can purchase an EDMUS 5 license on the EDMUS web site at [http://www.edmus.org/en/soft/edmus\\_purchase.html](http://www.edmus.org/en/soft/edmus_purchase.html)). The license will be sent to you by e-mail, as an attached zipped file.

To activate your EDMUS 5 license:

- o Unzip the attached file, you will get one or more file(s) with an ".ini" extension (for instance "B1286.ini"), each corresponding to an EDMUS license.
- o Launch EDMUS 5, and select "About EDMUS" from the "File" menu.
- o In the window that opens, click the "Activate license" button.
- o Go select the license file.
- o That's it! You can put the license file into the Trash, or keep it if you think you may need to activate your EDMUS 5 license again.



## 10. Language & Configuration

---

### o Language

At first launch, for a new EDMUS installation, the program will by default be in English. If you wish EDMUS to use another language:

- ▶ Choose "User Preferences" in the "Customize" menu.
- ▶ Then, in the "User Preferences" window, click Modify, select the language to use, and click OK.

### o Configuration

At first launch, for a new EDMUS installation, the program will be by default in the "Light" configuration, which only displays the main fields of the database. You can change this configuration:

- ▶ Choose "User Preferences" in the "Customize" menu.
- ▶ Then, in the "User Preferences" window, click Modify, select the configuration to use, and click OK.

The following configurations are available:

- ▶ **Premium**: the most complete (displays all fields of the database),
- ▶ **Light**: simplified (only displays the main fields of the database),
- ▶ **EDEN**: specifically tailored for NMO patients,
- ▶ **OFSEP Minimal**: very simplified, corresponding to the "Minimal OFSEP Form" (in use by the French Observatory of MS).

In every case, the same database is used, the difference is only one of presentation.

## 11. Place your database on a server

---

**You will now place your EDMUS database file on a networked computer** (server), to which all computers running the EDMUS software can have access.

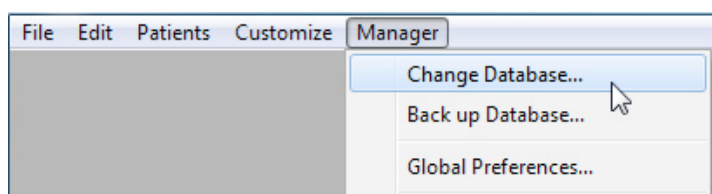
You now have an updated copy of your database file on your computer (see step 7 above): place this updated datafile on the server (and remove the older datafile if any). You can rename it if you wish, e.g. Edmus541.df1.

## 12. Point EDMUS to the shared database on the server

---

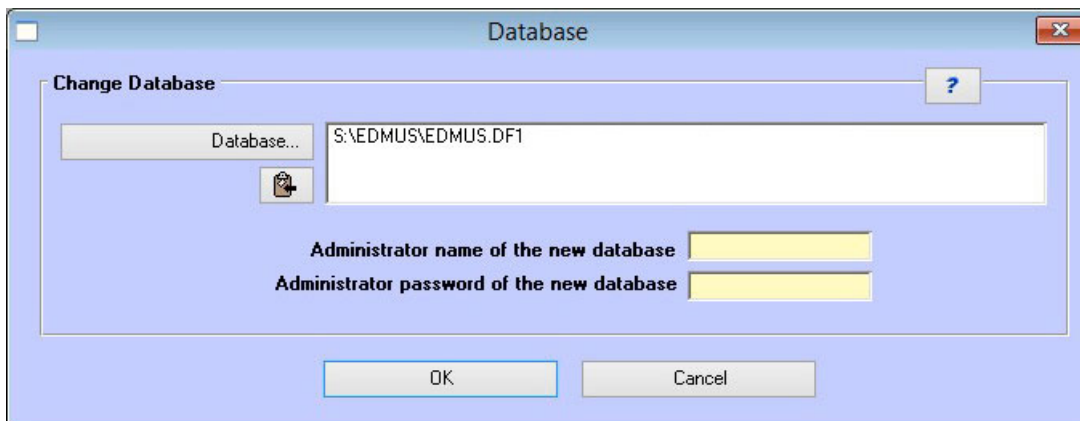
**You will now instruct the EDMUS software to access the shared database on the server.**

- o On the computer where you installed EDMUS 5.5.1, launch EDMUS.
- o In the "Manager" menu, select "Change Database...":





- o In the window that opens, click "Database..." and go find the shared database file on the server:



- o Enter the Administrator user name and password (the same ones you used for the old database), and click OK.
- o To check whether you are connected to the updated database file, select "Patient List" in the "Patients" menu, and click "Show patients".

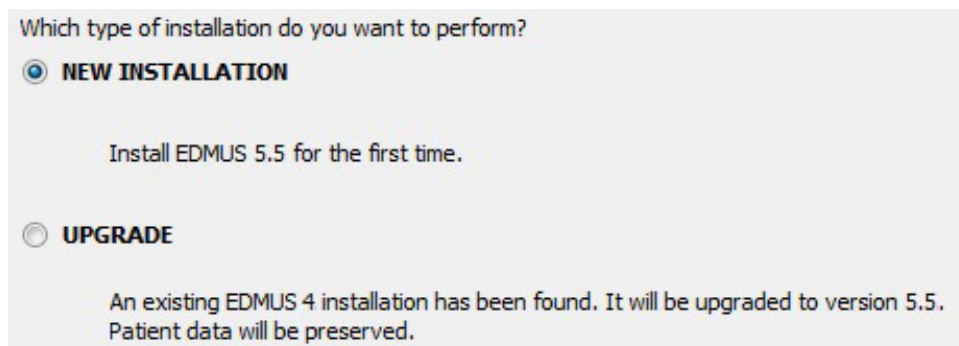
### 13. Install EDMUS on the other computers

---

On **every other computer** that must access the shared database, follow these steps:

- o *Install EDMUS 5.5.1 on the computer*

If asked, you should select "NEW INSTALLATION" and NOT "UPGRADE" (even if there is a previous EDMUS installation on the computer).



- o *BEFORE launching EDMUS on this computer*

You should **DELETE** the following files which the installer may have placed in the EDMUS Software v5/EDMUSdata folder in previous steps:

Countries.txt  
 Departements.txt  
 EDMUSV5\_EX.ETH  
 EDMUSV5\_ST.STH  
 EDMUSV5\_TH.THE  
 EDMUSV5\_TT.TTH  
 EDMUSV5.HLP  
 EDMUSV5.SCL  
 adresse\_adresse.fix  
 adresse\_patient.fix

Otherwise, the importation of thesaurus files into the shared database will be needlessly performed again, while you have already done it when installing EDMUS on the first computer.



- o *Activate an EDMUS 5 License on the computer (see step 9 above)*
  - The EDMUS installation on each computer should have a valid EDMUS license.
  - If you wish several computers to be able to access the database **at the same time**, each computer must have a **different** license.
- o *Change language and configuration if desired (see step 10 above)*
- o *Point EDMUS to the shared database on the server (see step 12 above)*

**VERY IMPORTANT:**  
**Install EDMUS 5.5.1 on ALL computers connected to the shared database**

To be able to access the shared database,  
all connected computers **MUST** use the same version of EDMUS.